

SAFETY AND SCHOOL ENVIRONMENT

Non-CSAP Course Offerings

Your School Offers	does	does not
• art.....	<input checked="" type="checkbox"/>	<input type="checkbox"/>
• drama or theater.....	<input type="checkbox"/>	<input checked="" type="checkbox"/>
• music.....	<input checked="" type="checkbox"/>	<input type="checkbox"/>
• physical education.....	<input checked="" type="checkbox"/>	<input type="checkbox"/>
• opportunity for civic or community engagement.....	<input checked="" type="checkbox"/>	<input type="checkbox"/>
• internet safety program.....	<input checked="" type="checkbox"/>	<input type="checkbox"/>
• International Baccalaureate.....	<input type="checkbox"/>	<input checked="" type="checkbox"/>
• extracurricular activities.....	<input checked="" type="checkbox"/>	<input type="checkbox"/>
• athletics.....	<input type="checkbox"/>	<input checked="" type="checkbox"/>
• preschool program.....	<input checked="" type="checkbox"/>	<input type="checkbox"/>
• full-day kindergarten program.....	<input checked="" type="checkbox"/>	<input type="checkbox"/>
• before-and-after-school care program.....	<input checked="" type="checkbox"/>	<input type="checkbox"/>

Safety and Discipline

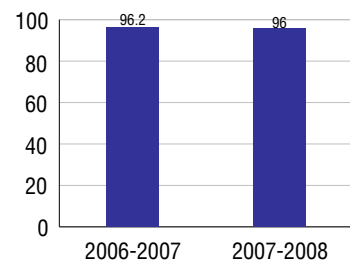
Safe schools are a top priority for parents, teachers, and communities. Your school safety and discipline record for the 2007-2008 school year is:

Type of Incident	Number of Incidents Reported	Percent of Total Incidents
Substance Abuse - Drugs		
Substance Abuse - Alcohol		
Substance Abuse - Tobacco		
Felony Assaults		
Fights		
Possession of Dangerous Weapons		
Other Violations Code of Conduct	1	100.0%

Student Attendance and School Calendar

2007-2008	Your School
Enrollment	231
Average Daily Attendance	222
Student Dropouts	N/A

Attendance Rate



Student Information Over Time

	2005-2006	2006-2007	2007-2008
Student Enrollment Stability	97.1%	94.2%	96.5%
Students Eligible for Free and Reduced Lunch	22.3 %	26.2 %	23.8 %

For more information and further details about this report, visit www.state.co.us/schools
Colorado Department of Education, 201 East Colfax Ave. Denver, CO 80203

Ames Elementary School
0140/5088/E

7300 South Clermont Drive . Littleton, CO 80122 . 303-347-4400
10/20/2008

DISTRICT TAXPAYER'S REPORT

Sources of School District Revenue 2007

Local Tax Contribution	\$61,747,638
State Tax Contribution	62,956,656
Federal Grants	6,542,401
State Grants	4,533,606
Private/Partnership Grants	109,725
Other Discretionary Income	15,130,320
Total District Operating Revenue	\$151,020,346
Long Term Debt Proceeds	5,172,249
Total District Revenue	\$156,192,595
Total District Operating Revenue Per Pupil =	\$9,887
Total District Revenue Per Pupil (Including Long Term Debt) =	\$10,226
District Per Pupil Operating Revenue =	\$5,868
State Average Per Pupil Operating Revenue =	\$6,080

District Use of Funds 2007

Instructional & Instructional Support	\$92,079,932
Administration	10,707,314
Building & Facilities Maintenance	11,087,352
Operational Expenditures	12,089,417
Debt Service	16,690,754
Other Expenditures	7,631,676
Total District Operating Expenditures	\$150,286,445
Capital Expenditures	13,148,312
Total District Use of Funds	\$163,434,757

District Debt and Capital Construction & Equipment

Total Outstanding Bonded Debt	\$111,480,000
Average Annual Percentage Interest Rate on Debt	5.12%
Amount Raised from Most Recent Bond	\$85,440,000
Amount Spent on New Buildings During Last 2 Years	\$24,656,682

Accreditation

Accreditation is Colorado's primary accountability system, incorporating achievement levels, academic growth, achievement gaps, post-secondary readiness, improvement planning, and compliance. The state accredits districts and districts accredit individual schools.

District Accreditation Status for the 2007-2008 school year:

Voter Approved Funding Changes

Your community did /did not hold an election in November 2006

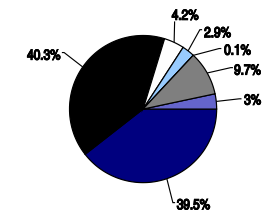
The following items have been approved by voters:

TABOR
Override

Bond

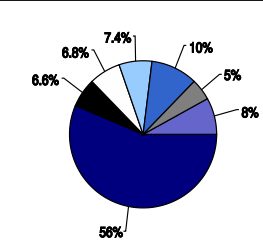
Mill Levy
Increase

District Source of Funds 2007



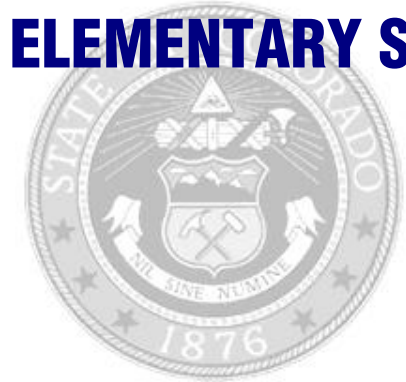
Local Tax Contribution
State Tax Contribution
Federal Grants
State Grants
Private/Partnership Grants
Other Discretionary Income
Long Term Debt Proceeds

District Use of Funds 2007



Instructional & Instructional Support
Administration
Building & Facilities Maintenance
Operational Expenditures
Debt Service
Other Expenditures
Capital Expenditures

AMES ELEMENTARY SCHOOL



LITTLETON 6

<http://www.littletonpublicschools.net/>

School Accountability Report 2007-2008 School Year

School Performance Summary

Overall Academic Performance on State Assessments High

Academic Growth of Students High

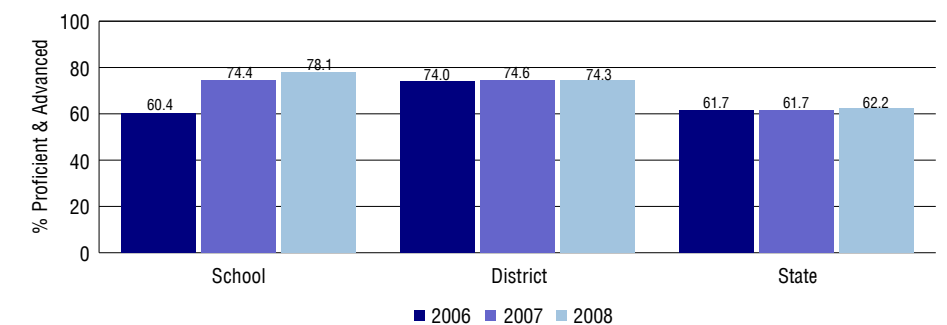
Overall Academic Performance on State Assessments

Each school in the State received a rating of "Excellent", "High", "Average", "Low", or "Unsatisfactory" for student academic performance based on 2007-2008 CSAP and COACT results. The rating is calculated using weighted percentages of each CSAP proficiency level for all content area and grade results for the school, as well as average COACT Reading, Writing, and Math Grade 11 results.

Academic Growth of Students

Each school in the State received a rating of "Low", "Typical", or "High" for student academic growth based on CSAP results. The calculation method is new for 2007-2008. The rating is calculated using student percentile scores matched over two years. More information about the Overall Academic Performance rating and Academic Growth of Students calculations can be found here: http://www.cde.state.co.us/cdeassess/SAR_Info.html.

Percent Proficient and Advanced for Elementary Grades for All Content Areas



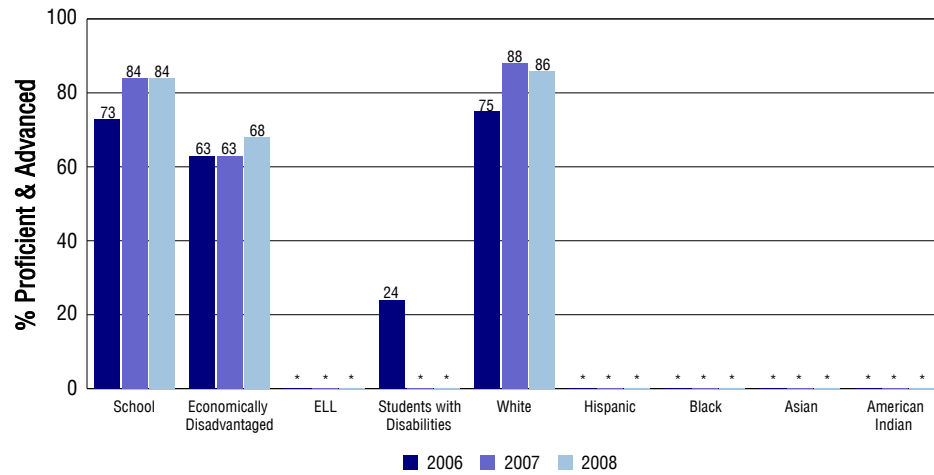
Student Test Scores Used For Calculating Overall Academic Performance

97.1%	Test Scores Counted
0.9%	Test Scores not used due to Language
2.0%	Test Scores not used due to New Student

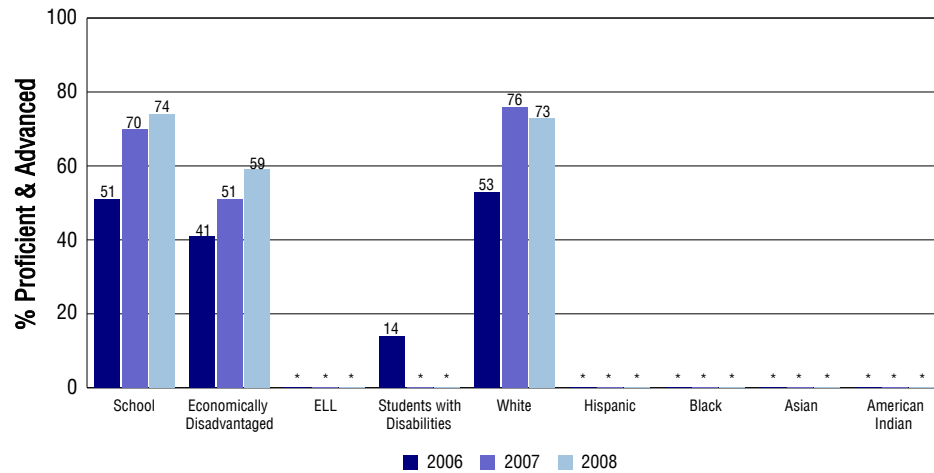
STUDENT PERFORMANCE

These graphs show the percent Proficient and Advanced trends over the past three years for Reading, Writing, and Math. Results are presented for the entire school for all reported grades as well as for different subgroups. Note: * indicates any group with less than 16 student results to be reported.

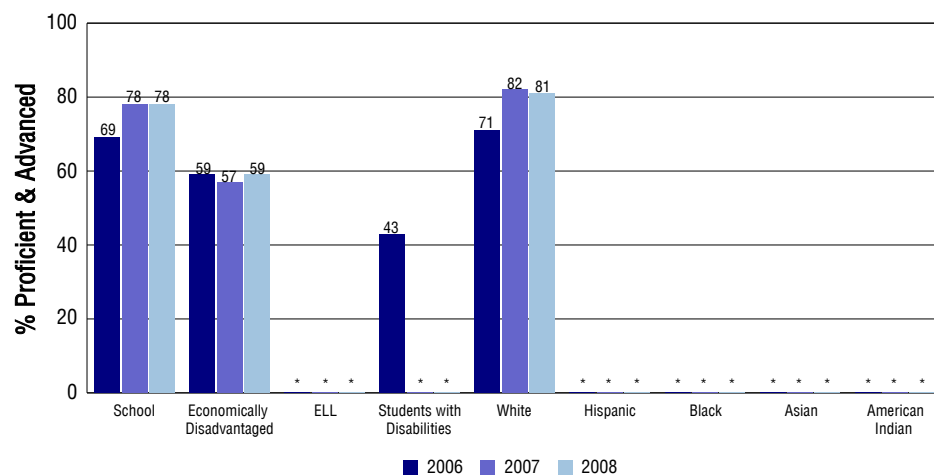
Reading



Writing



Math



SCHOOL INFORMATION

School Pride (as submitted by your district)

- Emphasis on early education through preschool and all-day kindergarten options.
- Infusion of a gifted education instructional philosophy through multiage classroom strand.
- Optional early bird and late owl classes in second languages, music, movement, and technology.
- Small town/private school environment steeped in literacy and student goal setting.

School Goals (as submitted by your district)

Recognizing that to write well, one must be able to read well and think well, our academic goal for writing requires building-wide focus on literacy throughout the day. Measurements at the end of last year demonstrated growth in 9 of 10 categories assessed by CSAP. District assessment results also demonstrated significant growth in 2nd grade writing. Our targeted area for school improvement continues to be writing, with a goal for 90 percent of our students demonstrating proficiency within three years.

No Child Left Behind - Adequate Yearly Progress

Did your school make AYP in reading? Yes Math? Yes
 How many targets does your school have? 16 Met? 16

Based on this school's academic performance, your child may be eligible for one or more of the following; ask your school if your child qualifies for:

Extra academic instruction either before or after-school, or in the summer
 Mentoring

For additional information regarding Adequate Yearly Progress please visit
<http://www.cde.state.co.us/FedPrograms/ayp/index.asp>

How Ames Elementary School Compares To Elementary Schools Within A 75-Mile Radius

School	Program Type	Academic Performance	Academic Growth
Sandburg Elementary School		High	High
Lois Lenski Elementary School		Excellent	High
Platte River Charter Academy(1)	Charter	Excellent	High
Homestead Elementary School(2)		Excellent	High
Peabody Elementary School		High	High
Heritage Elementary School(2)		High	Typical
Twain Elementary School		High	Typical
Roxborough Intermediate(1)		High	Typical
Dry Creek Elementary School(2)	Magnet	Excellent	High
Franklin Elementary School		High	High

1 Located in Douglas County RE 1 School District.
 2 Located in Cherry Creek 5 School District.

ABOUT OUR STAFF

School Employment

Each year, your district reports to the Colorado Department of Education on the number of adults who work in your school, as well as the type of work they do. Last year, your school employed:

	Your School		District	
	Full Time	Part Time	Full Time	Part Time
Teachers	12	2	837	93
Paraprofessionals	3	13	221	237
Administrators	1	0	90	4
Other Professionals	4	3	123	32
School Support	2	6	247	160
School Counselors	0	0	26	4
School Librarians	0	1	9	4
Total Staff	47		2085	

Students per Teacher Ratio

	Student Enrollment	Students per Teacher
Grade 1	33	11.7
Grade 2	37	28.1
Grade 3	31	9.3
Grade 4	33	18.2
Grade 5	44	24.2

Professional Experience of Teachers

	Your School	District
Average years of teaching experience	9	13
Percent of teachers teaching in the subject in which they received their degree	N/A	N/A
Number of teachers with Masters or Doctoral degrees	8	565
Teachers with 3 years or more of teaching experience	11	801
Teachers with less than 3 years of teaching experience	3	129
Number of professional development days	8	8

Salaries

	Your School	District	State
Average Teacher Salary	\$51,810	\$54,598	\$47,494
Average Administrator Salary	\$101,565	\$93,070	\$80,444

Principal: Nancy Klinedinst

Number of years as Principal at this school: 4

Number of years as Principal at any school: 4