

SAFETY AND SCHOOL ENVIRONMENT

Non-CSAP Course Offerings

Your School Offers	does	does not
• art.....	<input checked="" type="checkbox"/>	<input type="checkbox"/>
• drama or theater.....	<input checked="" type="checkbox"/>	<input type="checkbox"/>
• music.....	<input checked="" type="checkbox"/>	<input type="checkbox"/>
• physical education.....	<input checked="" type="checkbox"/>	<input type="checkbox"/>
• opportunity for civic or community engagement.....	<input checked="" type="checkbox"/>	<input type="checkbox"/>
• internet safety program.....	<input checked="" type="checkbox"/>	<input type="checkbox"/>
• International Baccalaureate.....	<input type="checkbox"/>	<input checked="" type="checkbox"/>
• extracurricular activities.....	<input checked="" type="checkbox"/>	<input type="checkbox"/>
• athletics.....	<input checked="" type="checkbox"/>	<input type="checkbox"/>
• career and technical education.....	<input checked="" type="checkbox"/>	<input type="checkbox"/>
• advanced placement.....	<input checked="" type="checkbox"/>	<input type="checkbox"/>
• honors.....	<input checked="" type="checkbox"/>	<input type="checkbox"/>

Safety and Discipline

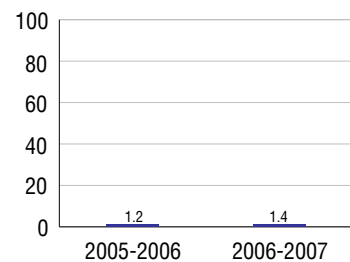
Safe schools are a top priority for parents, teachers, and communities. Your school safety and discipline record for the 2007-2008 school year is:

Type of Incident	Number of Incidents Reported	Percent of Total Incidents
Substance Abuse - Drugs	14	13.7%
Substance Abuse - Alcohol	5	4.9%
Substance Abuse - Tobacco		
Felony Assaults		
Fights		
Possession of Dangerous Weapons		
Other Violations Code of Conduct	83	81.4%

Student Attendance and School Calendar

2007-2008	Your School
Enrollment	1,687
Average Daily Attendance	1,599
Student Dropouts	1.4%

Dropout Rate



Student Information Over Time

	2005-2006	2006-2007	2007-2008
Student Enrollment Stability	95.1%	94.2%	97.5%
Students Eligible for Free and Reduced Lunch	6.6 %	6.7 %	7.0 %

For more information and further details about this report, visit www.state.co.us/schools
Colorado Department of Education, 201 East Colfax Ave. Denver, CO 80203

Heritage High School
0140/3930/H

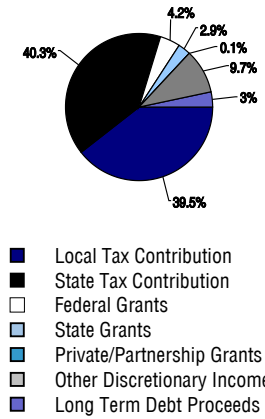
1401 West Geddes Avenue . Littleton, CO 80120 . 303-347-7600
10/20/2008

DISTRICT TAXPAYER'S REPORT

Sources of School District Revenue 2007

Local Tax Contribution	\$61,747,638
State Tax Contribution	62,956,656
Federal Grants	6,542,401
State Grants	4,533,606
Private/Partnership Grants	109,725
Other Discretionary Income	15,130,320
Total District Operating Revenue	\$151,020,346
Long Term Debt Proceeds	5,172,249
Total District Revenue	\$156,192,595
Total District Operating Revenue Per Pupil =	\$9,887
Total District Revenue Per Pupil (Including Long Term Debt) =	\$10,226
District Per Pupil Operating Revenue =	\$5,868
State Average Per Pupil Operating Revenue =	\$6,080

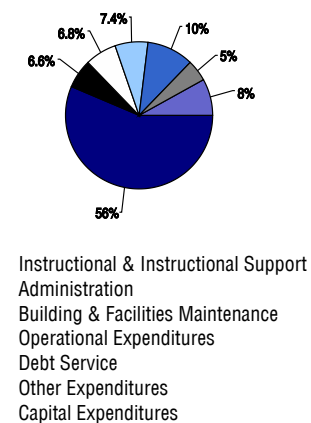
District Source of Funds 2007



District Use of Funds 2007

Instructional & Instructional Support	\$92,079,932
Administration	10,707,314
Building & Facilities Maintenance	11,087,352
Operational Expenditures	12,089,417
Debt Service	16,690,754
Other Expenditures	7,631,676
Total District Operating Expenditures	\$150,286,445
Capital Expenditures	13,148,312
Total District Use of Funds	\$163,434,757

District Use of Funds 2007



District Debt and Capital Construction & Equipment

Total Outstanding Bonded Debt	\$111,480,000
Average Annual Percentage Interest Rate on Debt	5.12%
Amount Raised from Most Recent Bond	\$85,440,000
Amount Spent on New Buildings During Last 2 Years	\$24,656,682

Accreditation

Accreditation is Colorado's primary accountability system, incorporating achievement levels, academic growth, achievement gaps, post-secondary readiness, improvement planning, and compliance. The state accredits districts and districts accredit individual schools.

District Accreditation Status for the 2007-2008 school year:

Voter Approved Funding Changes

Your community did /did not hold an election in November 2006

The following items have been approved by voters:

TABOR
Override

Bond

Mill Levy
Increase

HERITAGE HIGH SCHOOL



LITTLETON 6

<http://www.littletonpublicschools.net/>

School Accountability Report 2007-2008 School Year

School Performance Summary

Overall Academic Performance on State Assessments

Excellent

Academic Growth of Students

High

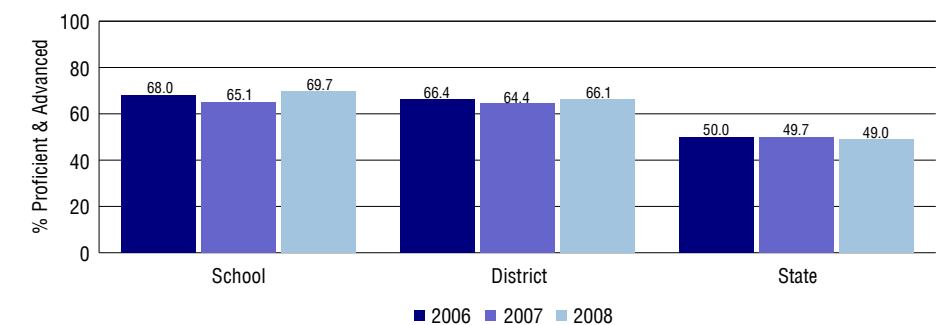
Overall Academic Performance on State Assessments

Each school in the State received a rating of "Excellent", "High", "Average", "Low", or "Unsatisfactory" for student academic performance based on 2007-2008 CSAP and COACT results. The rating is calculated using weighted percentages of each CSAP proficiency level for all content area and grade results for the school, as well as average COACT Reading, Writing, and Math Grade 11 results.

Academic Growth of Students

Each school in the State received a rating of "Low", "Typical", or "High" for student academic growth based on CSAP results. The calculation method is new for 2007-2008. The rating is calculated using student percentile scores matched over two years. More information about the Overall Academic Performance rating and Academic Growth of Students calculations can be found here: http://www.cde.state.co.us/cdeassess/SAR_Info.html.

Percent Proficient and Advanced for High Grades for All Content Areas



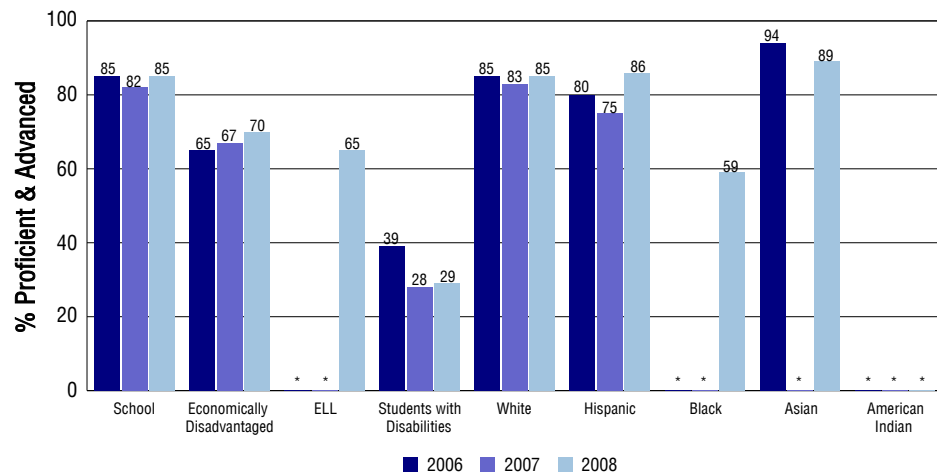
Student Test Scores Used For Calculating Overall Academic Performance

97.7%	Test Scores Counted
0.5%	Test Scores not used due to Language
1.9%	Test Scores not used due to New Student

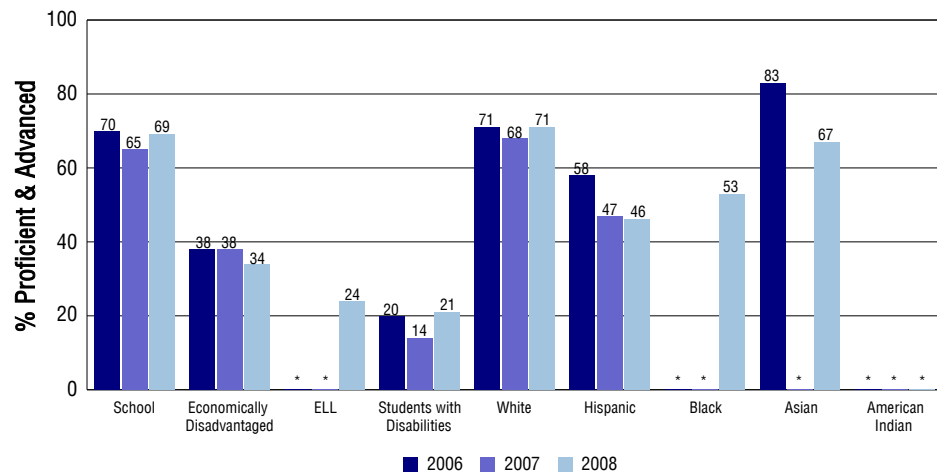
STUDENT PERFORMANCE

These graphs show the percent Proficient and Advanced trends over the past three years for Reading, Writing, and Math. Results are presented for the entire school for all reported grades as well as for different subgroups. Note: * indicates any group with less than 16 student results to be reported.

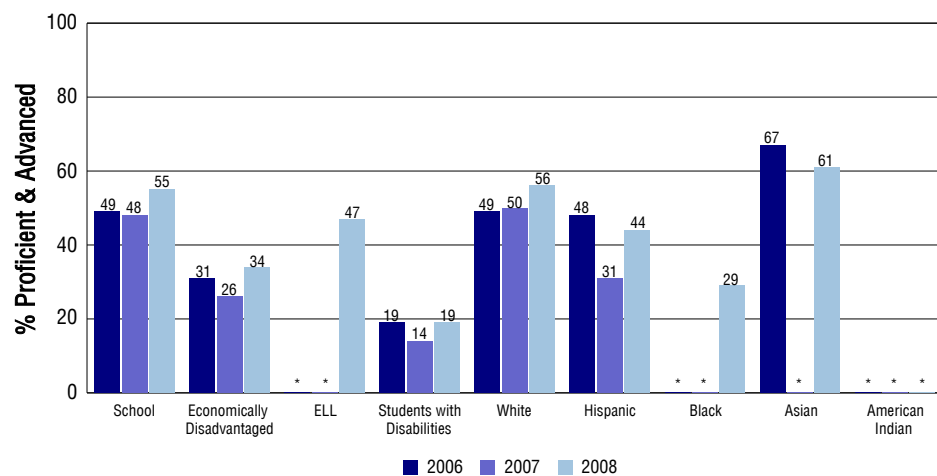
Reading



Writing



Math



SCHOOL INFORMATION

School Pride (as submitted by your district)

- HHS administered 755 AP Exams; 500 Exams scored with a 3 or better. Newsweek Magazine ranked HHS as one of the top 1% of high schools in the nation.
- 92% of Heritage High School graduates go to colleges or universities around the globe.
- We offer a full complement of Activities and Athletics with many of our students achieving State and National Honors including 14 athletic scholarships in 2008.
- HHS is a comprehensive high school with many academic accolades. We had 2 Boettcher Scholar winners and 10 students receive National Merit recognition in 2008.

School Goals (as submitted by your district)

HHS will provide more successful access to AP courses. Successful access is defined by a 1% increase in enrollment and a 2% increase in scores of 3 or higher/year through '09. HHS will use multiple means to foster a culture of academic focus in 9th & 10th graders while enhancing positive student-teacher interactions in Advisory. 9th & 10th graders will utilize school-wide systems and Advisory for improvement so the percentage of students with at least one grade below a C will decrease by 2% per semester. HHS will increase the percentage of 9th & 10th graders who score Proficient or above by 2%/year on CSAP Reading and Writing and by 5%/year on CSAP Math through '09.

No Child Left Behind - Adequate Yearly Progress

Did your school make AYP in reading?	Yes	Math?	Yes
Did your school make the graduation rate targets?	Yes		
How many targets does your school have?	24	Met?	24

Based on this school's academic performance, your child may be eligible for one or more of the following; ask your school if your child qualifies for:

Extra academic instruction either before or after-school, or in the summer
Mentoring

For additional information regarding Adequate Yearly Progress please visit
<http://www.cde.state.co.us/FedPrograms/ayp/index.asp>

How Heritage High School Compares To High Schools Within A 75-Mile Radius

School	Program Type	Academic Performance	Academic Growth
Hope Online Learning Academy Co-Op(1)	Charter, Online	Unsatisfactory	Low
Littleton High School		High	Low
Arapahoe High School		Excellent	Typical
Thunderridge High School(2)		High	Typical
Mountain Vista High School(2)		Excellent	Low
Columbine High School(3)		High	Typical
Sheridan High School(4)		Low	Typical
Englewood High School(5)		Average	Typical
Eagle Academy(2)	Alternative	Low	No Rating
Highlands Ranch High School(2)		High	Typical

1 Located in Vilas RE-5 School District.
2 Located in Douglas County RE 1 School District.
3 Located in Jefferson County R-1 School District.
4 Located in Sheridan 2 School District.
5 Located in Englewood 1 School District.

ABOUT OUR STAFF

School Employment

Each year, your district reports to the Colorado Department of Education on the number of adults who work in your school, as well as the type of work they do. Last year, your school employed:

	Your School		District	
	Full Time	Part Time	Full Time	Part Time
Teachers	82	7	837	93
Paraprofessionals	18	5	221	237
Administrators	5	0	90	4
Other Professionals	5	2	123	32
School Support	16	9	247	160
School Counselors	4	0	26	4
School Librarians	1	0	9	4
Total Staff	153		2085	

Students per Teacher Ratio

	Student Enrollment	Students per Teacher
Grade 9	455	20.4
Grade 10	398	18.7
Grade 11	374	17.6
Grade 12	460	21.6

Professional Experience of Teachers

	Your School	District
Average years of teaching experience	13	13
Percent of teachers teaching in the subject in which they received their degree	89%	82%
Number of teachers with Masters or Doctoral degrees	61	565
Teachers with 3 years or more of teaching experience	75	801
Teachers with less than 3 years of teaching experience	14	129
Number of professional development days	7	8

Salaries

	Your School	District	State
Average Teacher Salary	\$55,878	\$54,598	\$47,494
Average Administrator Salary	\$85,895	\$93,070	\$80,444

Principal: Kenneth Moritz

Number of years as Principal at this school: 4

Number of years as Principal at any school: 4