

# SAFETY AND SCHOOL ENVIRONMENT

## Non-CSAP Course Offerings

Your School Offers	does	does not
• art.....	<input checked="" type="checkbox"/>	<input type="checkbox"/>
• drama or theater.....	<input type="checkbox"/>	<input checked="" type="checkbox"/>
• music.....	<input checked="" type="checkbox"/>	<input type="checkbox"/>
• physical education.....	<input checked="" type="checkbox"/>	<input type="checkbox"/>
• opportunity for civic or community engagement.....	<input checked="" type="checkbox"/>	<input type="checkbox"/>
• internet safety program.....	<input checked="" type="checkbox"/>	<input type="checkbox"/>
• International Baccalaureate.....	<input type="checkbox"/>	<input checked="" type="checkbox"/>
• extracurricular activities.....	<input checked="" type="checkbox"/>	<input type="checkbox"/>
• athletics.....	<input checked="" type="checkbox"/>	<input type="checkbox"/>
• preschool program.....	<input type="checkbox"/>	<input checked="" type="checkbox"/>
• full-day kindergarten program.....	<input checked="" type="checkbox"/>	<input type="checkbox"/>
• before-and-after-school care program.....	<input type="checkbox"/>	<input checked="" type="checkbox"/>

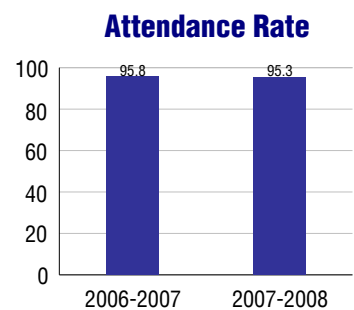
## Safety and Discipline

Safe schools are a top priority for parents, teachers, and communities. Your school safety and discipline record for the 2007-2008 school year is:

Type of Incident	Number of Incidents Reported	Percent of Total Incidents
Substance Abuse - Drugs		
Substance Abuse - Alcohol		
Substance Abuse - Tobacco		
Felony Assaults		
Fights		
Possession of Dangerous Weapons		
Other Violations Code of Conduct	20	100.0%

## Student Attendance and School Calendar

2007-2008	Your School
Enrollment	492
Average Daily Attendance	469
Student Dropouts	N/A



## Student Information Over Time

	2005-2006	2006-2007	2007-2008
Student Enrollment Stability	98.4%	99.2%	97.2%
Students Eligible for Free and Reduced Lunch	0.0 %	0.0 %	0.0 %

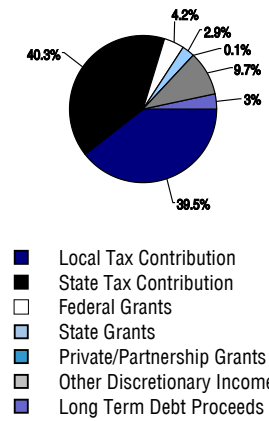
For more information and further details about this report, visit [www.state.co.us/schools](http://www.state.co.us/schools)  
 Colorado Department of Education, 201 East Colfax Ave. Denver, CO 80203  
**Littleton Prep Charter School**  
 0140/5233/E  
 5151 South Federal Boulevard Suite 1 . Littleton, CO 80123 . 303-734-1995  
 10/20/2008

# DISTRICT TAXPAYER'S REPORT

## Sources of School District Revenue 2007

Local Tax Contribution	\$61,747,638
State Tax Contribution	62,956,656
Federal Grants	6,542,401
State Grants	4,533,606
Private/Partnership Grants	109,725
Other Discretionary Income	15,130,320
<b>Total District Operating Revenue</b>	<b>\$151,020,346</b>
Long Term Debt Proceeds	5,172,249
<b>Total District Revenue</b>	<b>\$156,192,595</b>
<b>Total District Operating Revenue Per Pupil =</b>	<b>\$9,887</b>
<b>Total District Revenue Per Pupil (Including Long Term Debt) =</b>	<b>\$10,226</b>
<b>District Per Pupil Operating Revenue =</b>	<b>\$5,868</b>
<b>State Average Per Pupil Operating Revenue =</b>	<b>\$6,080</b>

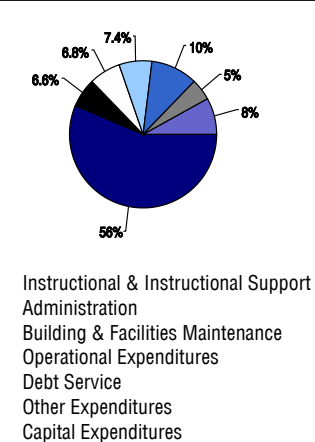
## District Source of Funds 2007



## District Use of Funds 2007

Instructional & Instructional Support	\$92,079,932
Administration	10,707,314
Building & Facilities Maintenance	11,087,352
Operational Expenditures	12,089,417
Debt Service	16,690,754
Other Expenditures	7,631,676
<b>Total District Operating Expenditures</b>	<b>\$150,286,445</b>
Capital Expenditures	13,148,312
<b>Total District Use of Funds</b>	<b>\$163,434,757</b>

## District Use of Funds 2007



## District Debt and Capital Construction & Equipment

Total Outstanding Bonded Debt	\$111,480,000
Average Annual Percentage Interest Rate on Debt	5.12%
Amount Raised from Most Recent Bond	\$85,440,000
Amount Spent on New Buildings During Last 2 Years	\$24,656,682

## Accreditation

Accreditation is Colorado's primary accountability system, incorporating achievement levels, academic growth, achievement gaps, post-secondary readiness, improvement planning, and compliance. The state accredits districts and districts accredit individual schools.

District Accreditation Status for the 2007-2008 school year:

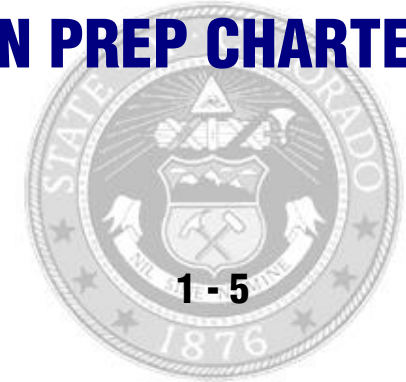
## Voter Approved Funding Changes

Your community did  /did not  hold an election in November 2006

The following items have been approved by voters:

- TABOR Override
- Bond
- Mill Levy Increase

# LITTLETON PREP CHARTER SCHOOL



**LITTLETON 6**  
Charter

<http://www.littletonpublicschools.net/>

## School Accountability Report 2007-2008 School Year

### School Performance Summary

**Overall Academic Performance on State Assessments** **High**

**Academic Growth of Students** **Typical**

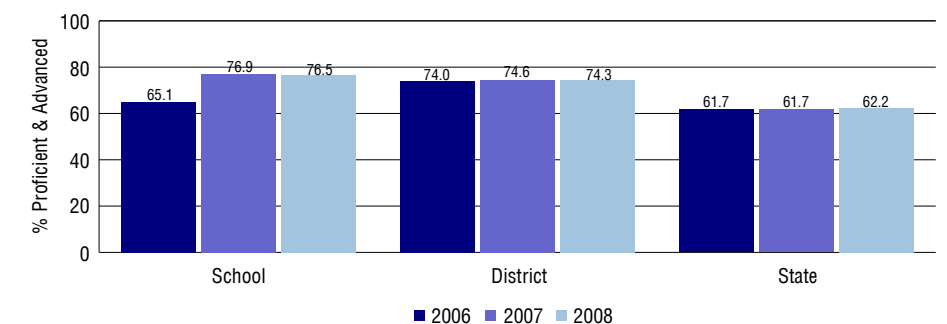
### Overall Academic Performance on State Assessments

Each school in the State received a rating of "Excellent", "High", "Average", "Low", or "Unsatisfactory" for student academic performance based on 2007-2008 CSAP and COACT results. The rating is calculated using weighted percentages of each CSAP proficiency level for all content area and grade results for the school, as well as average COACT Reading, Writing, and Math Grade 11 results.

### Academic Growth of Students

Each school in the State received a rating of "Low", "Typical", or "High" for student academic growth based on CSAP results. The calculation method is new for 2007-2008. The rating is calculated using student percentile scores matched over two years. More information about the Overall Academic Performance rating and Academic Growth of Students calculations can be found here: [http://www.cde.state.co.us/cdeassess/SAR\\_Info.html](http://www.cde.state.co.us/cdeassess/SAR_Info.html).

### Percent Proficient and Advanced for Elementary Grades for All Content Areas



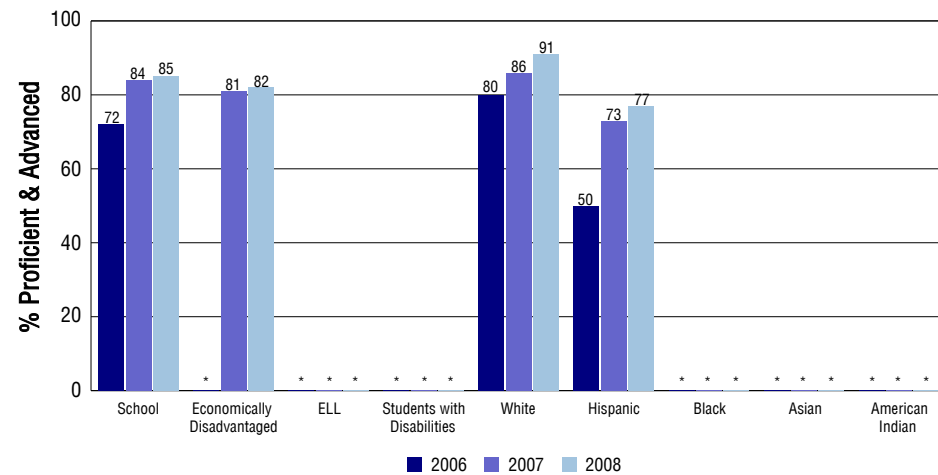
### Student Test Scores Used For Calculating Overall Academic Performance

98.4%	Test Scores Counted
1.1%	Test Scores not used due to Language
0.5%	Test Scores not used due to New Student

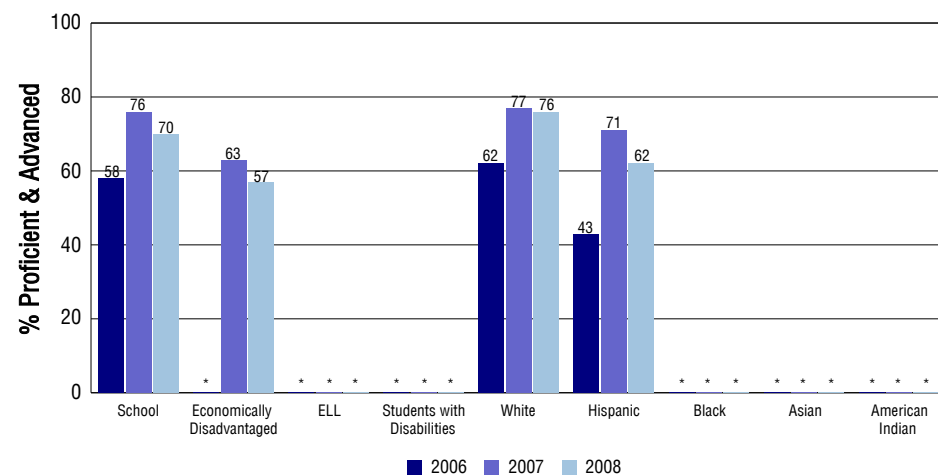
## STUDENT PERFORMANCE

These graphs show the percent Proficient and Advanced trends over the past three years for Reading, Writing, and Math. Results are presented for the entire school for all reported grades as well as for different subgroups. Note: \* indicates any group with less than 16 student results to be reported.

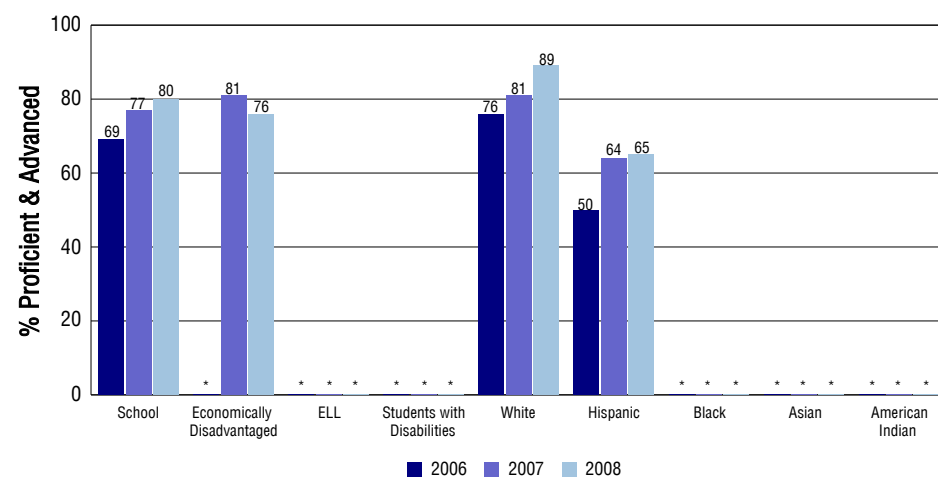
### Reading



### Writing



### Math



## SCHOOL INFORMATION

### School Pride (as submitted by your district)

- LP uses an academically rigorous curriculum with definite academic goals and topics for each grade, guided by the nationally respected Core Knowledge sequence.
- Positive discipline program (with school uniforms) that encourages student safety, respect and dignity in teacher-directed classrooms.
- Diverse student population with 72% of our students coming from out side of the Littleton Public School district and benefits from a 97% staff retention rate.
- Specials classes offered in study skills, Spanish, library, Accelerated Reader, art, music, technology and physical education.

### School Goals (as submitted by your district)

Student academic achievement is the primary goal of Littleton Prep. Students must first master the fundamentals to achieve mastery of higher-level skills. We define mastery as the ability to demonstrate knowledge and skills repeatedly and accurately. This requires repeated instruction in the subject matter, increasing degree of challenge and considerable practice. Student mastery of the core academic subjects with advancement to more challenging materials is central to the concept of Littleton Prep.

### No Child Left Behind - Adequate Yearly Progress

Did your school make AYP in reading? Yes Math? Yes  
 How many targets does your school have? 18 Met? 18

Based on this school's academic performance, your child may be eligible for one or more of the following; ask your school if your child qualifies for:

Extra academic instruction either before or after-school, or in the summer  
 Mentoring

For additional information regarding Adequate Yearly Progress please visit  
<http://www.cde.state.co.us/FedPrograms/ayp/index.asp>

### How Littleton Prep Charter School Compares To Elementary Schools Within A 75-Mile Radius

School	Program Type	Academic Performance	Academic Growth
Alice Terry Elementary School(1)		No Rating	No Rating
Centennial Academy Of Fine Arts Education		Average	Typical
Kaiser Elementary School(2)		Low	Typical
Fort Logan Elementary School(1)		Low	Low
Clayton Elementary School(3)		Average	Low
Wilder Elementary School		Excellent	High
Hope Online Learning Academy Co-Op(4)	Charter, Online	Low	Low
Maddox Elementary School(3)		Average	Typical
Moody Elementary School		Average	Low
Cherrelyn Elementary School(3)		Low	Low

1 Located in Sheridan 2 School District.  
 2 Located in Denver County 1 School District.  
 3 Located in Englewood 1 School District.  
 4 Located in Vilas RE-5 School District.

## ABOUT OUR STAFF

### School Employment

Each year, your district reports to the Colorado Department of Education on the number of adults who work in your school, as well as the type of work they do. Last year, your school employed:

	Your School		District	
	Full Time	Part Time	Full Time	Part Time
Teachers	22	7	837	93
Paraprofessionals	6	9	221	237
Administrators	1	1	90	4
Other Professionals	0	2	123	32
School Support	2	5	247	160
School Counselors	0	0	26	4
School Librarians	1	0	9	4
<b>Total Staff</b>	56		2085	

### Students per Teacher Ratio

	Student Enrollment	Students per Teacher
Grade 1	57	14.2
Grade 2	59	14.7
Grade 3	60	22.2
Grade 4	52	19.6
Grade 5	60	31

### Professional Experience of Teachers

	Your School	District
Average years of teaching experience	6	13
Percent of teachers teaching in the subject in which they received their degree	N/A	N/A
Number of teachers with Masters or Doctoral degrees	6	565
Teachers with 3 years or more of teaching experience	20	801
Teachers with less than 3 years of teaching experience	9	129
Number of professional development days	9	8

### Salaries

	Your School	District	State
Average Teacher Salary	\$38,727	\$54,598	\$47,494
Average Administrator Salary	\$80,269	\$93,070	\$80,444

Principal: Kimberly Ash

Number of years as Principal at this school: 4

Number of years as Principal at any school: 4