

# SAFETY AND SCHOOL ENVIRONMENT

## Non-CSAP Course Offerings

Your School Offers	does	does not
• art.....	<input checked="" type="checkbox"/>	<input type="checkbox"/>
• drama or theater.....	<input type="checkbox"/>	<input checked="" type="checkbox"/>
• music.....	<input checked="" type="checkbox"/>	<input type="checkbox"/>
• physical education.....	<input checked="" type="checkbox"/>	<input type="checkbox"/>
• opportunity for civic or community engagement.....	<input checked="" type="checkbox"/>	<input type="checkbox"/>
• internet safety program.....	<input checked="" type="checkbox"/>	<input type="checkbox"/>
• International Baccalaureate.....	<input type="checkbox"/>	<input checked="" type="checkbox"/>
• extracurricular activities.....	<input checked="" type="checkbox"/>	<input type="checkbox"/>
• athletics.....	<input type="checkbox"/>	<input checked="" type="checkbox"/>
• preschool program.....	<input checked="" type="checkbox"/>	<input type="checkbox"/>
• full-day kindergarten program.....	<input type="checkbox"/>	<input checked="" type="checkbox"/>
• before-and-after-school care program.....	<input checked="" type="checkbox"/>	<input type="checkbox"/>

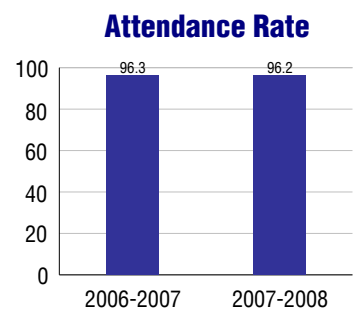
## Safety and Discipline

Safe schools are a top priority for parents, teachers, and communities. Your school safety and discipline record for the 2007-2008 school year is:

Type of Incident	Number of Incidents Reported	Percent of Total Incidents
Substance Abuse - Drugs		
Substance Abuse - Alcohol		
Substance Abuse - Tobacco		
Felony Assaults		
Fights		
Possession of Dangerous Weapons		
Other Violations Code of Conduct	5	100.0%

## Student Attendance and School Calendar

2007-2008	Your School
Enrollment	293
Average Daily Attendance	282
Student Dropouts	N/A



## Student Information Over Time

	2005-2006	2006-2007	2007-2008
Student Enrollment Stability	95.6%	96.4%	96.9%
Students Eligible for Free and Reduced Lunch	20.6 %	19.9 %	20.8 %

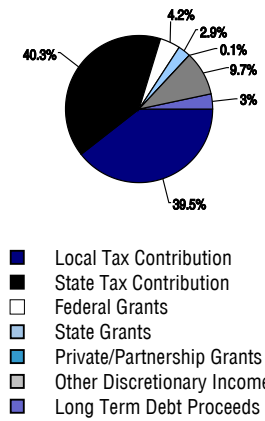
For more information and further details about this report, visit [www.state.co.us/schools](http://www.state.co.us/schools)  
 Colorado Department of Education, 201 East Colfax Ave. Denver, CO 80203  
**Whitman Elementary School**  
 0140/9530/E  
 6557 South Acoma Street . Littleton, CO 80120 . 303-347-4725  
 10/20/2008

# DISTRICT TAXPAYER'S REPORT

## Sources of School District Revenue 2007

Local Tax Contribution	\$61,747,638
State Tax Contribution	62,956,656
Federal Grants	6,542,401
State Grants	4,533,606
Private/Partnership Grants	109,725
Other Discretionary Income	15,130,320
<b>Total District Operating Revenue</b>	<b>\$151,020,346</b>
Long Term Debt Proceeds	5,172,249
<b>Total District Revenue</b>	<b>\$156,192,595</b>
<b>Total District Operating Revenue Per Pupil =</b>	<b>\$9,887</b>
<b>Total District Revenue Per Pupil (Including Long Term Debt) =</b>	<b>\$10,226</b>
<b>District Per Pupil Operating Revenue =</b>	<b>\$5,868</b>
<b>State Average Per Pupil Operating Revenue =</b>	<b>\$6,080</b>

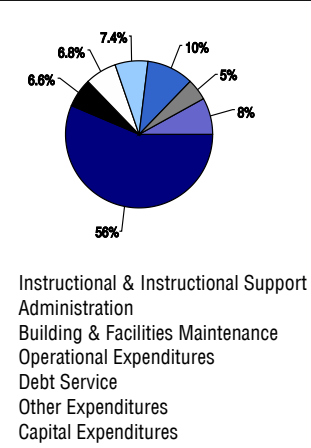
## District Source of Funds 2007



## District Use of Funds 2007

Instructional & Instructional Support	\$92,079,932
Administration	10,707,314
Building & Facilities Maintenance	11,087,352
Operational Expenditures	12,089,417
Debt Service	16,690,754
Other Expenditures	7,631,676
<b>Total District Operating Expenditures</b>	<b>\$150,286,445</b>
Capital Expenditures	13,148,312
<b>Total District Use of Funds</b>	<b>\$163,434,757</b>

## District Use of Funds 2007



## District Debt and Capital Construction & Equipment

Total Outstanding Bonded Debt	\$111,480,000
Average Annual Percentage Interest Rate on Debt	5.12%
Amount Raised from Most Recent Bond	\$85,440,000
Amount Spent on New Buildings During Last 2 Years	\$24,656,682

## Accreditation

Accreditation is Colorado's primary accountability system, incorporating achievement levels, academic growth, achievement gaps, post-secondary readiness, improvement planning, and compliance. The state accredits districts and districts accredit individual schools.

District Accreditation Status for the 2007-2008 school year:

## Voter Approved Funding Changes

Your community did  /did not  hold an election in November 2006

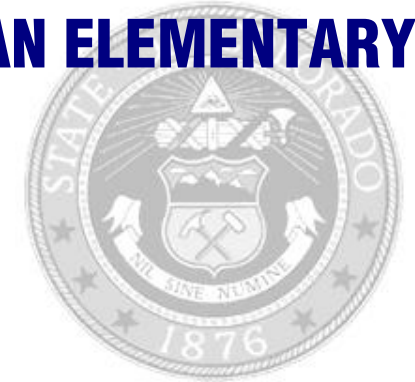
The following items have been approved by voters:

TABOR Override

Bond

Mill Levy Increase

# WHITMAN ELEMENTARY SCHOOL



LITTLETON 6

<http://www.littletonpublicschools.net/>

## School Accountability Report 2007-2008 School Year

### School Performance Summary

**Overall Academic Performance on State Assessments** **High**

**Academic Growth of Students** **High**

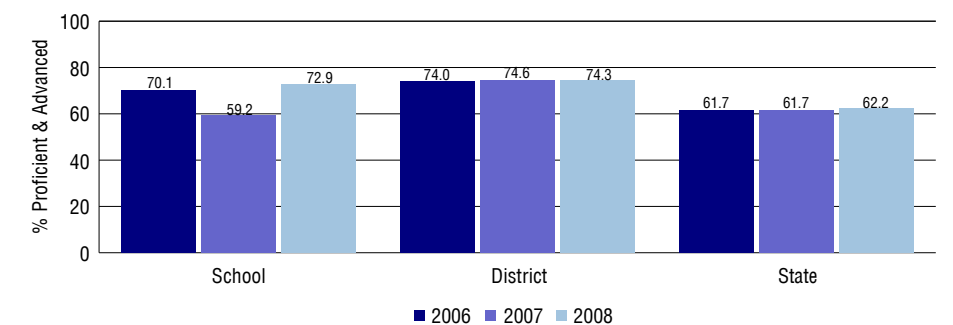
### Overall Academic Performance on State Assessments

Each school in the State received a rating of "Excellent", "High", "Average", "Low", or "Unsatisfactory" for student academic performance based on 2007-2008 CSAP and COACT results. The rating is calculated using weighted percentages of each CSAP proficiency level for all content area and grade results for the school, as well as average COACT Reading, Writing, and Math Grade 11 results.

### Academic Growth of Students

Each school in the State received a rating of "Low", "Typical", or "High" for student academic growth based on CSAP results. The calculation method is new for 2007-2008. The rating is calculated using student percentile scores matched over two years. More information about the Overall Academic Performance rating and Academic Growth of Students calculations can be found here: [http://www.cde.state.co.us/cdeassess/SAR\\_Info.html](http://www.cde.state.co.us/cdeassess/SAR_Info.html).

### Percent Proficient and Advanced for Elementary Grades for All Content Areas



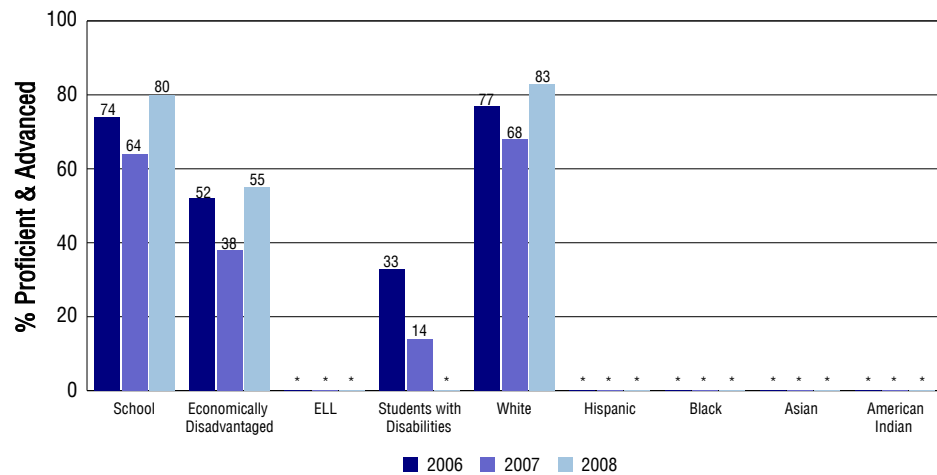
### Student Test Scores Used For Calculating Overall Academic Performance

93.1%	Test Scores Counted
3.1%	Test Scores not used due to Language
3.8%	Test Scores not used due to New Student

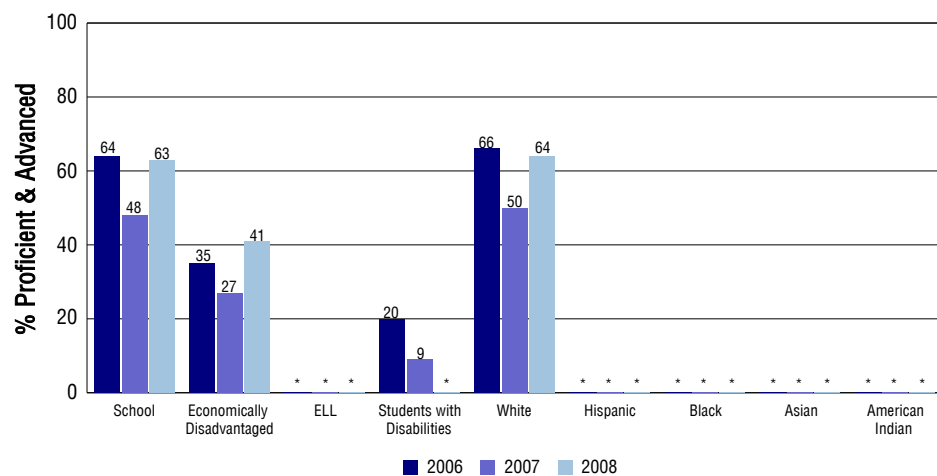
## STUDENT PERFORMANCE

These graphs show the percent Proficient and Advanced trends over the past three years for Reading, Writing, and Math. Results are presented for the entire school for all reported grades as well as for different subgroups. Note: \* indicates any group with less than 16 student results to be reported.

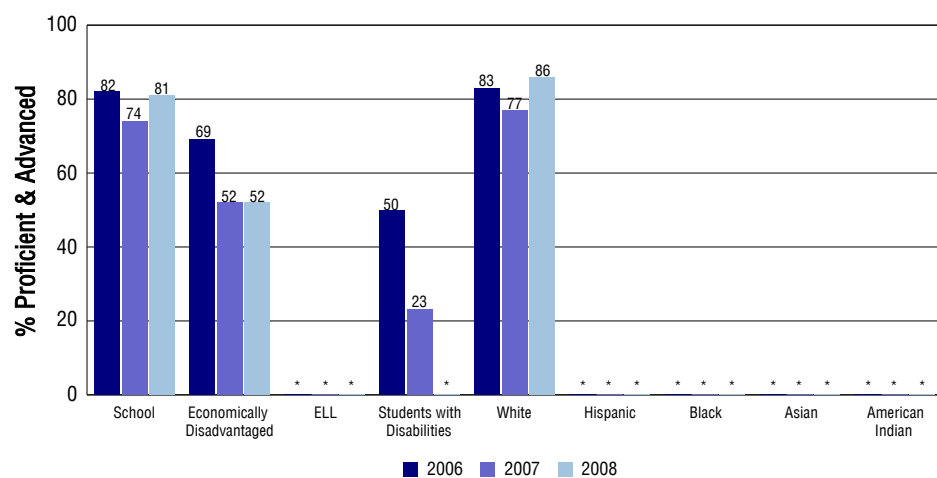
### Reading



### Writing



### Math



## SCHOOL INFORMATION

### School Pride (as submitted by your district)

- State of the art technology is incorporated into classroom instruction.
- Our students participate in a variety of extracurricular opportunities including math competitions, choir, drama club, fitness club.
- Award winning before and after school programs.
- Our parent community is an integral component of our school community.

### School Goals (as submitted by your district)

By May 2009 the percentage of proficient writers at each grade level will increase by 25% as measured by a body of evidence which will include: a piece scored by the building writing rubric for each grade level, 3-5 grade MAP Language, 3-5 grade Writing CSAP and the 2nd Grade District Writing Assessment.

### No Child Left Behind - Adequate Yearly Progress

Did your school make AYP in reading? Yes Math? Yes  
 How many targets does your school have? 12 Met? 12

Based on this school's academic performance, your child may be eligible for one or more of the following; ask your school if your child qualifies for:

Extra academic instruction either before or after-school, or in the summer  
 Mentoring

For additional information regarding Adequate Yearly Progress please visit  
<http://www.cde.state.co.us/FedPrograms/ayp/index.asp>

### How Whitman Elementary School Compares To Elementary Schools Within A 75-Mile Radius

School	Program Type	Academic Performance	Academic Growth
Connections Academy(1)	Online	Average	Typical
Highland Elementary School		High	Typical
East Elementary School		High	Typical
Hopkins Elementary School		Average	Typical
Moody Elementary School		Average	Low
Hope Online Learning Academy Co-Op(2)	Charter, Online	Low	Low
Runyon Elementary School		High	Typical
Franklin Elementary School		High	High
Twain Elementary School		High	Typical
Littleton Academy	Charter	Excellent	High

1 Located in Denver County 1 School District.  
 2 Located in Vilas RE-5 School District.

## ABOUT OUR STAFF

### School Employment

Each year, your district reports to the Colorado Department of Education on the number of adults who work in your school, as well as the type of work they do. Last year, your school employed:

	Your School		District	
	Full Time	Part Time	Full Time	Part Time
Teachers	18	2	837	93
Paraprofessionals	9	9	221	237
Administrators	1	0	90	4
Other Professionals	3	1	123	32
School Support	3	4	247	160
School Counselors	0	0	26	4
School Librarians	0	0	9	4
<b>Total Staff</b>	50		2085	

### Students per Teacher Ratio

	Student Enrollment	Students per Teacher
Grade 1	45	12.8
Grade 2	48	13.7
Grade 3	41	16.4
Grade 4	56	12.4
Grade 5	40	16

### Professional Experience of Teachers

	Your School	District
Average years of teaching experience	17	13
Percent of teachers teaching in the subject in which they received their degree	N/A	N/A
Number of teachers with Masters or Doctoral degrees	13	565
Teachers with 3 years or more of teaching experience	20	801
Teachers with less than 3 years of teaching experience	0	129
Number of professional development days	8	8

### Salaries

	Your School	District	State
Average Teacher Salary	\$62,892	\$54,598	\$47,494
Average Administrator Salary	\$99,257	\$93,070	\$80,444

Principal: Deborah Brown

Number of years as Principal at this school: 4

Number of years as Principal at any school: 11