

## 2009 Grade Two Writing Assessment

Percent of Students At or Above Proficient

Ideas, Content , Word Choice	65
Organization/Sentence Fluency	73
Conventions	77

## Fall 2008 CogAT Results Grade 3

	SAS	PR
Verbal	96.1	40
Quantitative	95.0	38
Nonverbal	99.9	50
Composite	97.1	43

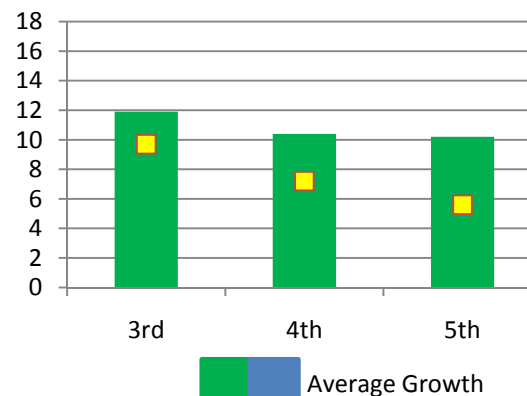
SAS = Standard Age Score

PR = Percentile rank shows percent of students in national sample with scores lower than typical Centennial students.

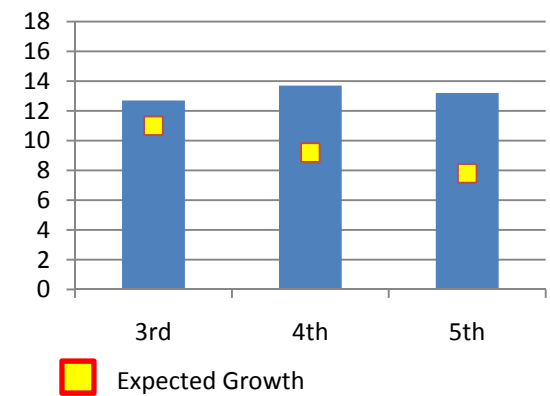
## Measures of Academic Progress (MAP)

Reading	Fall 2008		Spring 2009	
	Median RIT	PR	Median RIT	PR
3 <sup>rd</sup> Grade	190	45	203	59
4 <sup>th</sup> Grade	201	49	208	53
5 <sup>th</sup> Grade	204	38	213	52
Math	Fall 2008		Spring 2009	
	Median RIT	PR	Median RIT	PR
3 <sup>rd</sup> Grade	189	39	202	47
4 <sup>th</sup> Grade	200	39	212	52
5 <sup>th</sup> Grade	207	36	222	56

### Reading



### Math



Median RIT = Score with equal number of scores above and below; RIT is an equal-interval scale used to chart growth from year to year.  
PR = Percentile rank shows percent of students in national sample with scores lower than typical Centennial students.